

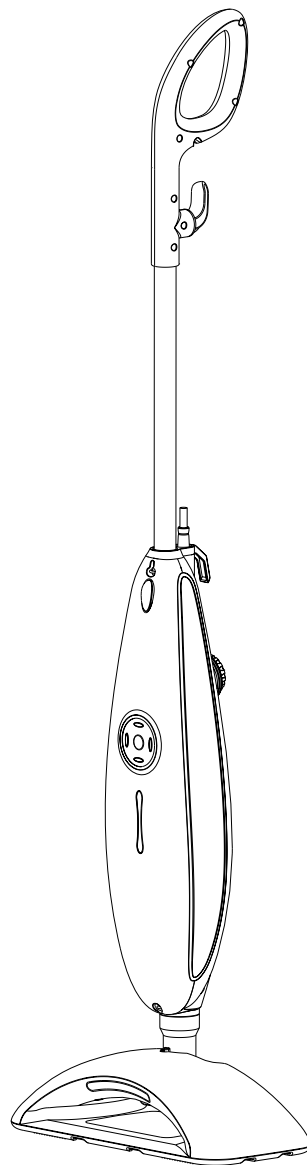
sienna™

Luna

SSM-3006 Steam Mop

SSM-3016 Plus Steam Cleaner

SAP-3016 Accessory Kit



INSTRUCTION MANUAL

INTRODUCTION

Thank you for choosing Sienna for your household cleaning needs. Our floor care products use the active power of steam without the use of chemicals; making it a green product that is safe for the ecosystem. You have begun the first step into transforming your house into a green, environmentally safe home. Our Sienna steam products are a modern way of cleaning that is efficient and far more sanitary than conventional methods.

When using our microfiber cloth pads to enhance absorbency combined with the power of germ killing steam, dirt and grime can be eliminated in a matter of seconds. The tiny hot vapor molecules penetrate porous surfaces being cleaned, expanding and forcing dirt, debris, and bacteria to the surface. When used correctly, our steam mops can kill dust mites and certain types of bacteria pathogens such as salmonella and E-coli on contact.

Since you do not need chemicals in order to use our products, not only will you see the savings in your wallet, but you have provided a safer place for you and your family to live in. We encourage you to improve your way of life, better the environment, and spend time enjoying your clean chemical free floor.

Luna

The Luna Steam Mop is an innovative product that cleans and sanitizes your home by harnessing the natural cleaning power of hot steam vapor. This unique versatile steam mop is well-suited to clean a variety of floor surfaces and has a soft touch digital lighted control panel with a vibration feature, a white LED light, and a black LED light along with 3 smart steam control settings for optimum cleaning. Use the vibration feature to help lift dirt and debris from a stubborn area. The white LED light will help to illuminate dark spaces and black LED light helps to make the spots previously missed visible. The Luna heats water up to 212° F and produces steam within 2 to 3 seconds. The water tank can be quickly refilled for up to 20 minutes of steam time. In addition, the included carpet glider ensures that your carpet is fresh and sanitized. The user-friendly design and energy saving feature is intended to tackle the toughest dirt and debris. The Luna is an easy to assemble mop that requires no tools. It features a 1500-watt heating element, a 450ml/15.2 fl oz water tank, a 180-degree swivel head, 2 eco-microfiber pads, and much more. A 12 piece accessory kit can be purchased separately.

Luna Plus

Not only is the Luna great for floors, but it can also be used on an endless amount of surfaces by simply removing the handle and mop head then attaching the shoulder strap to the unit allowing it to become a portable steam cleaner with multiple cleaning attachments (SSM-3016 model only). The 12 piece accessory kit includes a shoulder strap, 4 nylon brushes, 2 brass brushes, window squeegee, an angle concentrator nozzle, steam head, cloth pad and an extension hose.

SAFETY GUIDELINES

The Sienna Luna (SSM-3006) Steam Mop or Luna (SSM-3016) Plus Steam Cleaner are for indoor domestic floor use only. Any commercial use will void warranty. They are designed for sanitizing and cleaning an array of floor surfaces such as carpet, ceramic tile, sealed hardwood, marble, sealed laminate, stone, and vinyl floors. In addition to floors, you can use the Accessory Kit (SAP-3016) on countless surfaces such as countertops, windows, and outdoor grills.

Safety Instructions:



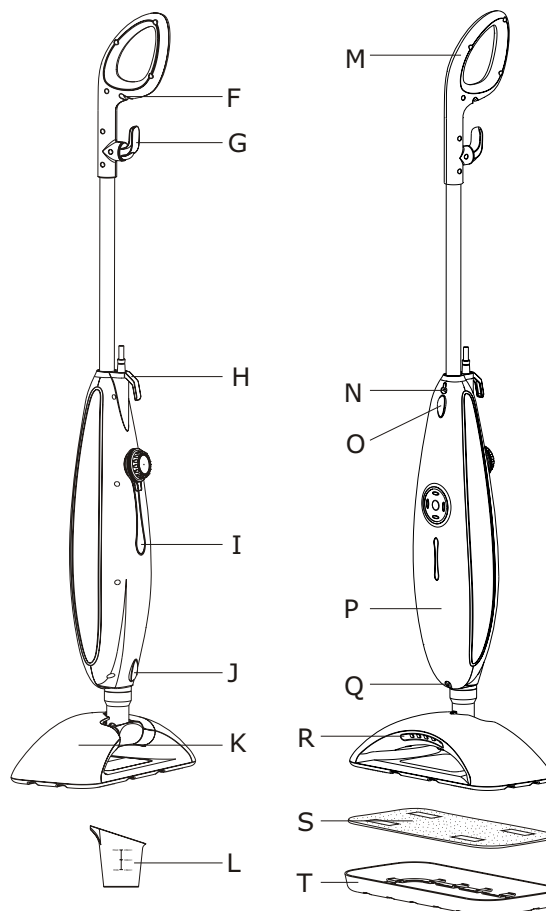
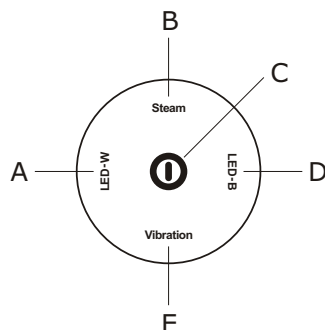
WARNING: DANGER OF SCALDING. BE SURE TO READ AND FOLLOW ALL SAFETY INSTRUCTIONS BEFORE USING YOUR STEAM MOP. PROPER CARE AND MAINTENANCE WILL HELP TO EXPAND THE LIFE OF YOUR STEAM MOP.

When using an electrical appliance, basic precautions should always be followed. To reduce the risk of fire, electric shock, or injury:

- Be sure to unplug the electrical cord when steamer is not in use and while servicing.
- This steamer is not intended for use by persons (including children) with reduced physical, sensory, mental capabilities or lack of experience and knowledge unless they have been instructed to do so by a person responsible for their safety.
- Children should be supervised and cautioned that the steamer is not a toy and should not be played with.
- Do not direct steam towards people, pets, electrical appliances, or electrical outlets.
- Do not immerse the steamer in water or other liquids.
- Do not handle steamer with wet hands.
- Do not pull power cord to disconnect steamer from socket or use cord as a handle. Be sure to keep cord away from heat, water, and sharp edges.
- Do not use if cord or plug is damaged.
- Do not use extension cords or outlets with inadequate current carrying capacity.
- Do not use steamer on any steam sensitive material such as velvet, leather, wax polished furniture or floors, synthetic and other delicate fabrics.
- Do not use on unsealed hardwood floors. By doing so, you may remove the sheen from the hardwood. It is recommended to test an isolated area with the steam mop before proceeding. As a precaution, you should check the manual made by the floor manufacturer for proper care instructions.
- Never put cleaning detergents or chemicals into the steamer as it will make the product unsafe and damage the unit.
- Do not use steamer without floor cloth pad in place.
- Use only manufacturer's recommended accessories.
- Stop using steamer if circuit breaker activates. Beware of risk of shock.
- Wear proper shoes when operating your steamer. Open-toed shoes, slippers or bare feet may cause you to slip and fall or cause hot steam on your feet.
- Allow your steamer to cool down before storing in a cool, dry place.

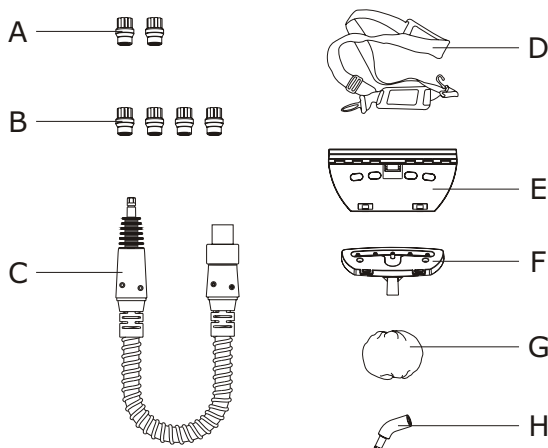
KEY FEATURES

- A. WHITE LED LIGHT BUTTON (LED-W)
- B. 3 LEVEL STEAM BUTTON
- C. POWER ON/OFF BUTTON
- D. BLACK LED LIGHT BUTTON (LED-B)
- E. VIBRATION BUTTON
- F. HANDLE CORD WRAP
- G. QUICK RELEASE CORD WRAP
- H. LOWER CORD WRAP
- I. ILLUMINATED WATER TANK
- J. MOP HEAD REMOVAL BUTTON
- K. MOP HEAD
- L. REFILL BEAKER
- M. HANDLE
- N. UPPER SHOULDER STRAP ATTACHMENT
- O. HANDLE REMOVAL BUTTON
- P. STEAMER BODY
- Q. LOWER SHOULDER STRAP ATTACHMENT
- R. LED-W AND LED-B LIGHT
- S. ECO-MICROFIBER CLOTH PAD
- T. CARPET GLIDER



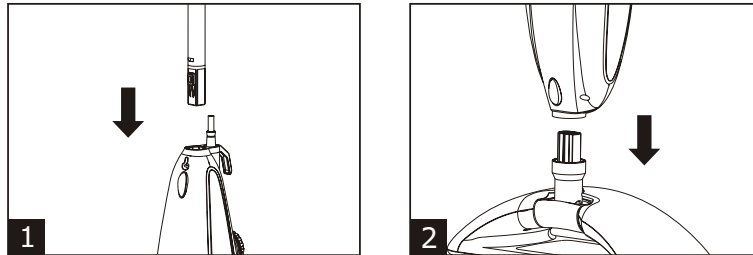
ACCESSORY KIT (SSM-3016 MODEL ONLY)

- A. 2 BRASS BRUSHES
- B. 4 NYLON BRUSHES
- C. EXTENSION HOSE
- D. SHOULDER STRAP
- E. WINDOW SQUEEGEE
- F. STEAM HEAD
- G. SMALL ECO-FIBER PAD
- H. ANGLE CONCENTRATOR NOZZLE

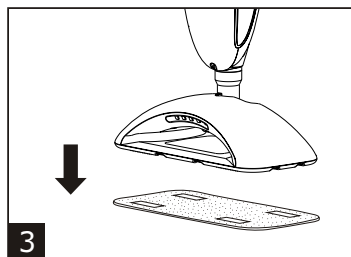


ASSEMBLY AND USE

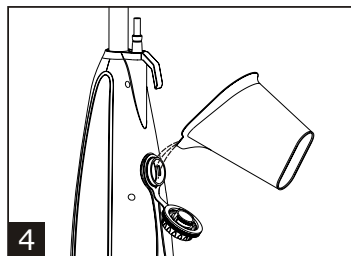
- 1) Attach handle to steamer body by pressing button on top front of steamer body and inserting handle tube in hole at top of steamer body.
- 2) Attach steamer body to mop head by pressing button on bottom back of steamer body and inserting steamer body in to mop head.



- 3) Set eco-microfiber cloth pad on the floor with microfiber side down. Align self adhesive strips at the bottom of steamer head with cloth pad. Place steam mop on top of cloth pad and apply pressure to assure hold.



- 4) Unscrew the water tank cap and fill with cool tap water by using refill beaker provided.



NOTE: The steam mop does not require distilled water. Residents in areas with hard water should use distilled water for better performance.

- 5) Twist the quick release cord wrap clockwise to unwrap the power cord completely.

NOTE: It is recommended that another high wattage appliance is not operated on the same circuit to avoid a circuit overload.

⚠ WARNING: THIS STEAMER HAS A POLARIZED PLUG (ONE BLADE IS WIDER THAN THE OTHER). TO REDUCE THE RISK OF ELECTRIC SHOCK, THIS PLUG IS INTENDED TO FIT IN A POLARIZED OUTLET ONLY ONE WAY. IF THE PLUG DOES NOT FIT IN THE OUTLET, REVERSE THE PLUG. IF IT STILL DOES NOT FIT, CONTACT A QUALIFIED ELECTRICIAN. DO NOT MODIFY THE PLUG IN ANY WAY.

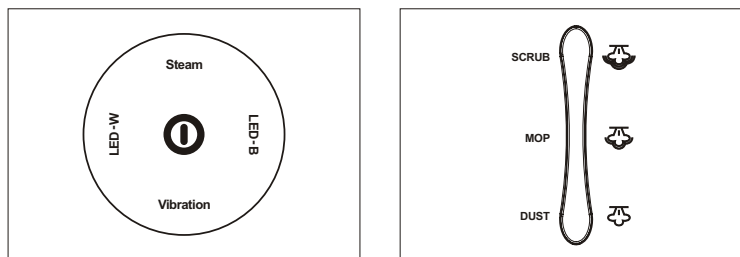
⚠ WARNING: ON SURFACES THAT HAVE BEEN TREATED WITH WAX, THE WAX MAY BE REMOVED BY THE HEAT AND STEAM ACTION. DO NOT USE ON UNSEALED WOOD FLOORS OR LET UNIT STAND ON ANY WOOD FLOOR FOR AN EXTENDED PERIOD OF TIME. THIS MAY CAUSE THE WOOD GRAIN TO RISE. IT IS RECOMMENDED THAT A SECTION BE TESTED IN AN ISOLATED AREA OF THE FLOOR. IT IS ALSO RECOMMENDED THAT YOU CHECK THE USE AND CARE INSTRUCTIONS FOR CLEANING FROM THE FLOOR MANUFACTURER TO ENSURE STEAM CLEANING IS ACCEPTABLE FOR YOUR FLOOR.

By pressing button(s) located on the soft touch digital control panel located on the front of the steamer body, you can begin to use your steam mop by choosing the following settings:

- 6) Turn Power ON/OFF button on.
- 7) Choose your desired steam setting(s). Steam option starts on mop setting. A colored light will indicate steam levels: dust (Orange) for wood floor surfaces, mop (Green) for tile or linoleum, and scrub (Red) works best in bathrooms.
- 8) The white LED light (LED-W) lights up the cleaning path for hard to see places.
- 9) The black LED light (LED-B) is used to show missed soiled stained areas.

NOTE: It is recommended to use both the LED-W light with the LED-B light together for maximum efficiency and illumination.

- 10) Our latest patented vibration feature with Micro Pulse Technology breaks up dirt and grime with over 90 vibrations per second. It allows for a deeper clean for tough; difficult areas by assisting the steam mop across the floor. Use this feature when working with stubborn stains.



- 11) Slowly pass over surface to be cleaned when steam is emitted. It is recommended to sweep or vacuum floor prior to using the steam mop.

NOTE: Your floor will be slightly wet immediately after moping, this is normal, and will dry within 5 minutes. This is due to the cooling effect of steam.

NOTE: Take advantage of the low profile mop head for hard to reach areas on your floor such as under a sofa or coffee table.

NOTE: The mop head swivels 180 degrees for tight, cramped spaces like in the bathroom around toilets.

⚠ CAUTION: To sanitize an area of your floor, leave the steam mop over the area for a minimum of 8 seconds, but no longer than 15 seconds. Leaving the steam mop in a stationary position for a longer period than recommended may cause build up of pail residue. This residue can be removed by using a decalcifying product or with a few drops of vinegar.

12) When steam mop stops emitting steam simply refill the water tank and continue cleaning.

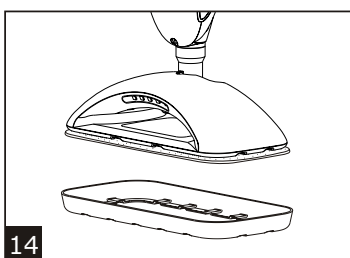
⚠ WARNING: NEVER RUN THE STEAM MOP WITHOUT WATER.

13) When you finish cleaning, unplug power cord from outlet. Be sure to empty water tank and carefully remove cloth pad from steamer head. Store the unit upright in a dry area.

⚠ CAUTION: The cloth pad may be very hot.

Carpet Glider

14) Lay carpet glider on the floor in an upright position with the rectangular flat surface facing downward. Place mop head on top of glider with eco-microfiber cloth pad in place.

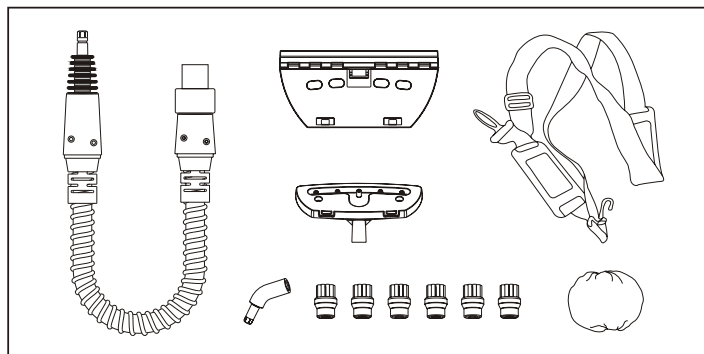


IMPORTANT: The carpet glider is not designed to be fixed to the floor mop head for safety reasons including preventing burns. It is designed for use on soft carpet areas only, not for hard floor surfaces.

NOTE: The steam mop includes a 30 minute auto shutoff feature that meets the energy saving requirements by the latest European ERP directive.

NOTE: The Luna 12 piece accessory kit may be purchased on our website at www.buysiennaproducts.com

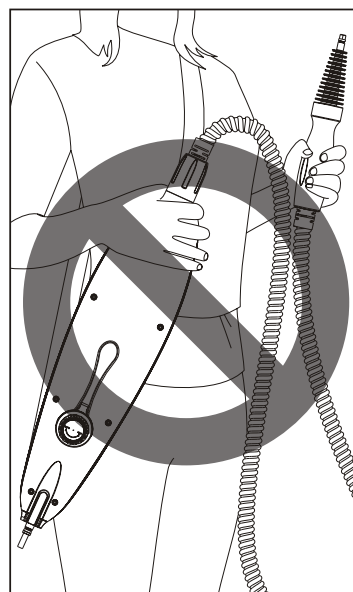
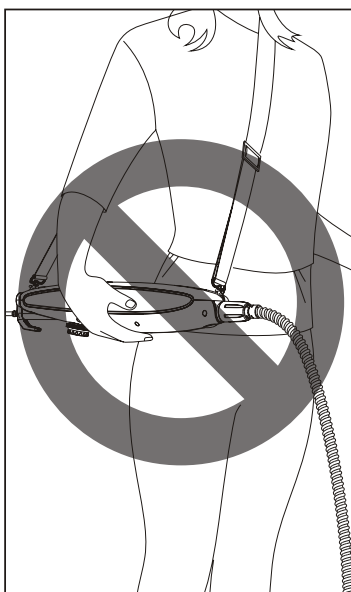
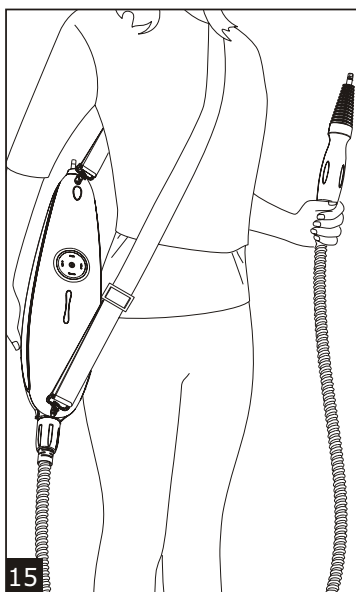
Plus (Accessory Kit)



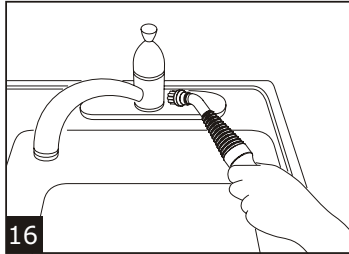
! WARNING: STEAMER MUST BE TURNED OFF IN ORDER TO SWITCH IT INTO A PORTABLE STEAMER. WHEN IN USE, BE SURE TO PUT THE STEAM LEVEL ON MOP OR SCRUB STEAM SETTINGS FOR OPTIMUM USAGE.

15) Shoulder strap- Attach strap to steamer body to convert the mop into a portable steam cleaning system. Adjust your strap to a comfortable length where the steamer body and extension hose is vertical to the floor.

! WARNING: BE SURE THAT STEAMER BODY IS FACING UPRIGHT WITH SIENNA LOGO FACING DOWNWARD TOWARDS THE FLOOR ALLOWING THE STEAMER TO STEAM PROPERLY. YOU MAY NOTICE SLIGHT DRIPPING FROM THE EXTENSION HOSE; THIS IS NORMAL DUE TO BUILD UP OF CONDENSATION.



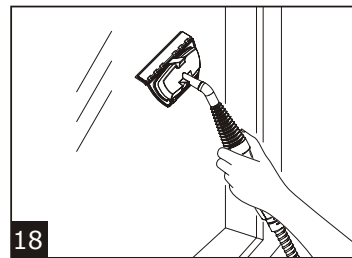
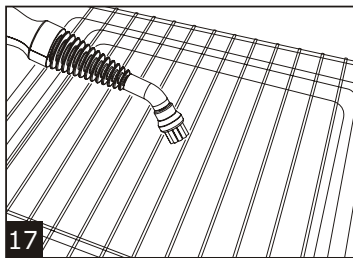
- 16) Nylon brush- Attach brush onto either the extension hose nozzle or the angle concentrator nozzle for cleaning in hard to reach places. Use in places such as grout, kids toys, tire rims and car interior.



- 17) Brass brush- Use the brass brush in the same way as the nylon brush, but use for tough surfaces that won't scratch such as outdoor grills.

- 18) Window squeegee- Cleans windows, mirrors and shower doors.

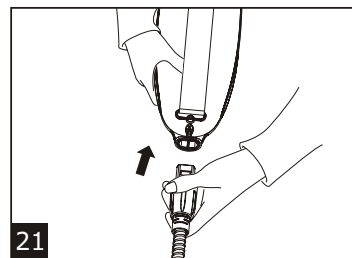
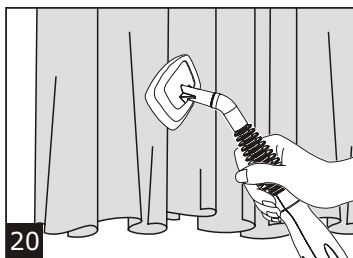
! **CAUTION: When cleaning delicate surfaces such as glass, use the lowest setting, dust, to prevent cracking.**



- 19) Angle concentrator nozzle- This attachment is used for hard to reach places that you need to get to with an angle. Both the nylon and brass brushes work best when using this attachment.

- 20) Steam head with eco-fiber pad- Attach the steam head to the extension hose and add the cloth pad to clean surfaces such as garments, window coverings, floors, upholstery, etc.

- 21) Extension hose- Use this 6 ft. hose to assist with all the attachments to make cleaning easier.



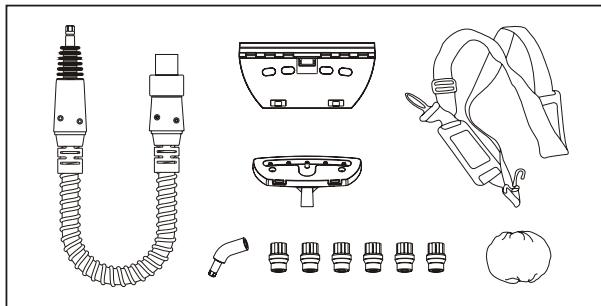
CLEANING AND MAINTENANCE



CAUTION: Prior to cleaning or maintaining your steam mop, isolate the unit by removing the cord from the power socket and avoid immersing the unit in water.

- 1) The eco-microfiber cloth pads can be machine washed in hot water and tumble dry. Do not use bleach or fabric softener. Allow to dry fully before use.
- 2) Wipe steam mop and accessories with soft cloth when/if necessary.

NOTE: The Luna 12 piece accessory kit and our eco-microfiber cloth pads may be purchased on our website at www.buysiennaproducts.com.



Product Specs:

Voltage supply: 120, 60 Hz

Output: 1500 W

Water tank capacity: max 15.2 fl oz

Cord: 25 ft

Weight: 5 lbs

Protection class: 2

TROUBLESHOOTING



CAUTION: Prior to cleaning or maintaining your steam mop, isolate the unit by removing the cord from the power socket.

PROBLEM	SOLUTION
Steamer turns off while in use	<ul style="list-style-type: none"> • After 30 minutes of use, the " auto shut off " feature engages. Simply turn the unit back on and continue cleaning.
LED is not on	<ul style="list-style-type: none"> • Ensure auto shutoff feature has not been engaged. Simply turn power button back on and proceed. • Ensure steamer power cord is correctly plugged into a 120V AC power outlet only. • Ensure circuit breaker is operational. • Try operating steamer from another power outlet. • If unit is still not working, call customer service at 1-888-574-3662.
No steam	<ul style="list-style-type: none"> • Ensure water tank is full. • Calcium and mineral deposits can build up and impact the performance of your steamer, use distilled water if necessary.
Pale residue left on floor	<ul style="list-style-type: none"> • This can be caused by leaving the steamer in the same spot for too long. Residue can be removed with household white vinegar or a decalcifying product. • Alternatively, reheat the area for one minute to remove residue (do not overheat area.)
Steamer is leaking water all over the floor	<ul style="list-style-type: none"> • The microfiber cloth pad may be overused and needs to be changed out with additional cloth pad(s) provided. Cloth pads can be cleaned in washer/dryer. Over time, however, the cloth pads can start to wear. • Be sure microfiber cloth pad is attached properly. • If the unit should continue to leak water, unplug and wait 5 minutes before trying again.
Floors are cloudy, streaky or spotty after mopping floor	<ul style="list-style-type: none"> • Be sure to use light detergent when cleaning mop pads, any residue on pad may be transferred onto floor. • Replace cloth pad with a new, clean one for effective cleaning. • If initial use of steamer, past cleaning products may have left a residue on your floor, continue to go over effected area until there is not residue or streaks left behind.

CUSTOMER SUPPORT

For problems with your Sienna Luna Steam Mop or Luna Plus Steam Cleaner, please refer to Troubleshooting guide. Additional inquiries should be directed to our Customer Service department by calling 1-888-574-3662 or by e-mail to: customerservice@anvidproducts.com.

ONE YEAR LIMITED WARRANTY

Our Sienna product warranty extends only to the original customer purchaser of the product. It is warranted by the manufacturer to be free from all defects in materials or workmanship for a period of one year from the date of original purchase. This warranty is subject to the following conditions, exclusions and exceptions.

Exclusions:

This warranty does not cover normal wear and tear of parts and does not apply to any product that has been tampered with or used for commercial purposes. This warranty does not cover damage caused by misuse, abuse, negligent handling or damage due to mishandling in transit or shipping. This warranty does not cover damage or defects caused by or resulting from repairs, service or alterations to the product or any of its parts, which have been performed by a repair person not authorized by the manufacturer. This warranty is effective only if the product is purchased and operated in the USA or Canada, and does not extend to any units which have been used in violation of written instructions furnished by the manufacturer, or to units which have had the serial number removed, altered, defaced or rendered illegible.

Performance:

During the limited warranty period, the manufacturer will, at its option, repair or replace free of charge a defective product or part that is covered by this warranty. As a matter of warranty policy, the manufacturer will not refund the purchase price. A repaired or replacement product will be covered by this warranty for the balance of the initial one year warranty period.

To contact Customer Service:

Write: Anvid Products, Inc.
1401-1499 Greenville Road
Livermore, CA 94550

E-mail: customerservice@anvidproducts.com

Or call: 1-888-5SIENNA (1-888-574-3662)

Please refer to your product name and model number when contacting Customer Service.

Customer Service will give you further instructions for returning a defective product for repair or replacement. When returning a defective product, carefully pack the item to avoid damage in shipping, the manufacturer cannot assume responsibility for loss or damage during incoming shipment. We recommend that you insure the package, as damage in shipping including the shipping cost is not covered under our warranty. Be sure to include the following items with your product: any accessories related to the product, your name, complete address and phone number, a note describing the problem you experienced; and a copy of your sales slip or other proof of purchase to determine warranty status. C.O.D. shipments cannot be accepted.

Limitation of Remedies: No representative or person is authorized to assume for the manufacturer any other liability in connection with the sale of our products. This limited warranty is not transferable and any sale, transfer or other disposition of the product voids this limited warranty. There shall be no claims for defects or failure of performance or product failure under any theory of tort, contract or commercial law including, but not limited to, negligence, gross negligence, strict liability, breach of warranty and breach of contract.

ANY IMPLIED WARRANTIES, OBLIGATIONS, OR LIABILITIES, INCLUDING, BUT NOT LIMITED TO, THE IMPLIED WARRANTY OF MERCHANTABILITY AND FITNESS FOR A PARTICULAR PURPOSE, SHALL BE LIMITED TO THE DURATION OF THIS WARRANTY. Some states do not allow limitations on how long an implied warranty lasts, so the above limitations may not apply to you.

REPAIR OR REPLACEMENT SHALL BE THE SOLE REMEDY OF THE PURCHASER UNDER THIS LIMITED WARRANTY, AND IN NO EVENT SHALL THE MANUFACTURER BE LIABLE FOR ANY SPECIAL, INCIDENTAL, OR CONSEQUENTIAL DAMAGES, LOSSES OR EXPENSES YOU MAY INCUR IN CONNECTION WITH YOUR PURCHASE OR USE OF THE PRODUCT OR FOR ANY BREACH OF THIS OR ANY OTHER WARRANTY, EXPRESS OR IMPLIED, WHATSOEVER. Some states do not allow the exclusion or limitation of special, incidental, or consequential damages, so the above limitation may not apply to you. This limited warranty gives you specific legal rights, and you may also have other rights which vary from state to state.