

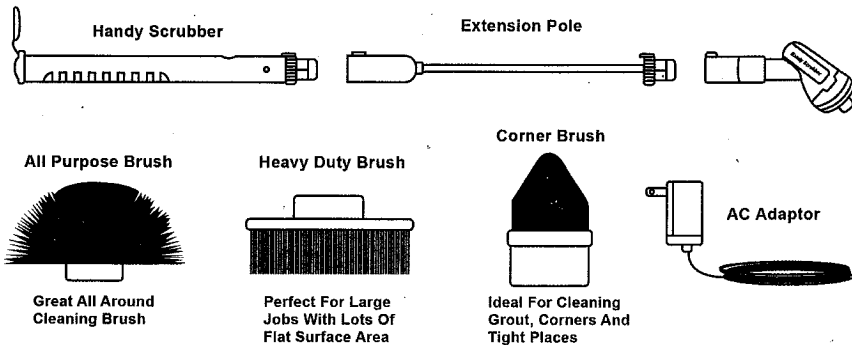
Handy Scrubber

Instruction Manual

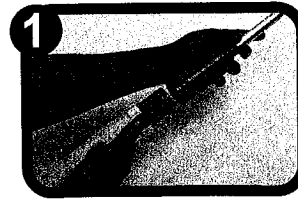
▲ CAUTION

- Store Out Of Reach Of Children. This Product Is Not A Toy.
- Close Supervision Is Required When Any Appliance Is Used By Or Near Children
- To Protect Against The Risk Of Electric Shock, Do Not Put The Battery Charger In Water Or Other Liquids. Do Not Charge Battery If It Is Wet Or Shows Signs Of Corrosion
- Do Not Use An Extension Cord. Plug The Charger Directly In To A Standard 120v Power Outlet
- Do Not Charge This Unit Outdoors
- Do Not Attempt To Use This Charge With And Other Produce
- Do Not Attempt To Charge This Product With Any Other Charger
- Do Not Use This Charger In Wet Or Damp Conditions. It Is Intended For Indoor Use Only
- Do Not Use Charger Near Sinks Or Tubs. Do Not Immerse In Water
- Do Not Abuse The Cord. Do Not Carry The Charger By The Cord Or Yank The Cord To Disconnect Keep Charging Cord Away From Heat And Sharp Edges
- Do Not Allow The Cord To Hang Over The Edge Of A Table Or Counter Or Touch Hot Surfaces. The Charger Should Be Placed Away From Sinks And Hot Surfaces
- Unplug The Charger When Not In Use And Before Cleaning
- Do Not Operate Adapter If It Has Received A Sharp Blow, Been Dropped Or Otherwise Damaged In Any Other Way. Do Not Disassemble The Adapter For Any Reason
- For Best Results Do Not Charge A Battery When It Or The Air Temperature Is Below 40°F(5°C) Or Above 105°F(40°C)
- Always Store This Unit Indoors
- Do Not Operate In The Presence Of Explosives And/Or Other Flammable Fumes Or Liquids
- Do Not Store Or Use The Appliance Close To High Temperatures
- If Abnormal Noise, Smell, Smoke Or Any Other Failure Or Breakage Is Found During Operation, Turn Off The Switch And Unplug It
- Only Charge The Unit When It Is In The OFF Position
- This Appliance Is Only For Household Use, Not For Commercial Or Industrial Use
- Always Use Proper Eye Protection When Using This Unit With Irritating Substances. Rubber Gloves Are Also Recommended
- Only Change The Scrubber Heads When The Unit Is In The Off Position
- Keep Hair, Loose Clothing And All Parts Off The Body Away From The Moving Parts Of The Unit
- Do Not Use This Unit When The Protective Charging Cover Is Not In Place. Do Not Submerge The Handle In Water Or Other Liquids.
- To Avoid Risk Of Suffocation, Keep All Plastic Bags Away From Children

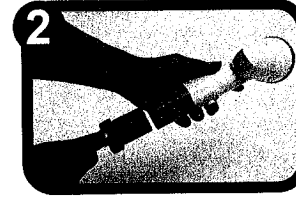
Set Includes:



SETTING UP UNIT:



Join The Main Handle To The Extension Handle Until You Hear A "CLICK" Sound



Join The Scrubber Head Assembly To The Extension Handle Until You Hear A "CLICK" Sound



Strongly Hold The Preferred Scrubber Head Assembly With One Hand And Then Push The Preferred Scrubber Head On Until Secured

BEGIN TO USE:

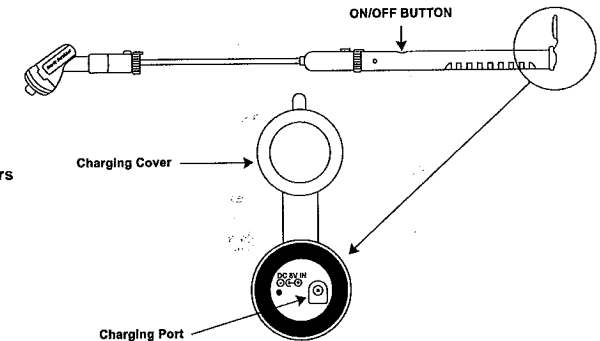
1. Add Water And Cleaning Solution To The Place You Want To Be Cleaned And/Or The Head Of Handy Scrubber
2. Turn The Switch To On By Pressing On/Off Switch
3. Hold The Unit By Its Handle And Slowly Press The Scrubber Head To The Desired Cleaning Area. Must Not Push To Hard.
4. Once Your Cleaning Is Complete Turn On/Off Switch To Off
5. Make Sure Unit Is Dry And Store Away In A Safe Area

CARE:

- Clean Unit With A Soft Cloth
- Only Use A Mild Detergent To Clean Unit. Must Not Use Alcohol-Based Or Abrasive Cleaners
- Must Let Unit Dry By Separating All Parts

CHARGING THE UNIT:

- Place Charging Adapter Inside The Charging Port On The Bottom Of The Unit.
- A Red Light Will Occur When Charging
- You Must Charge For 20 Hours During Your First Charge. Later Charges Only Take 8 Hours
- Unit May Become Warm When Your Charging
- Keep Unit Off When Charging
- Close Cover Once Charging Complete



REMOVING BATTERY:

- Handy Scrubber Uses A Ni-Cad Rechargeable Battery
- Once Battery Cannot Be Charged It Should Be Removed And Recycled
- To Remove Battery Unscrew Both Sides (Pic 1)
- Grab The Bottom Of The Handle And Top Of The Unit And Pull The Battery Assembly Out (Pic 2)
- Remove The Tape, Un-Clip Black And Red Wires And Remove Battery (Pic 3)

